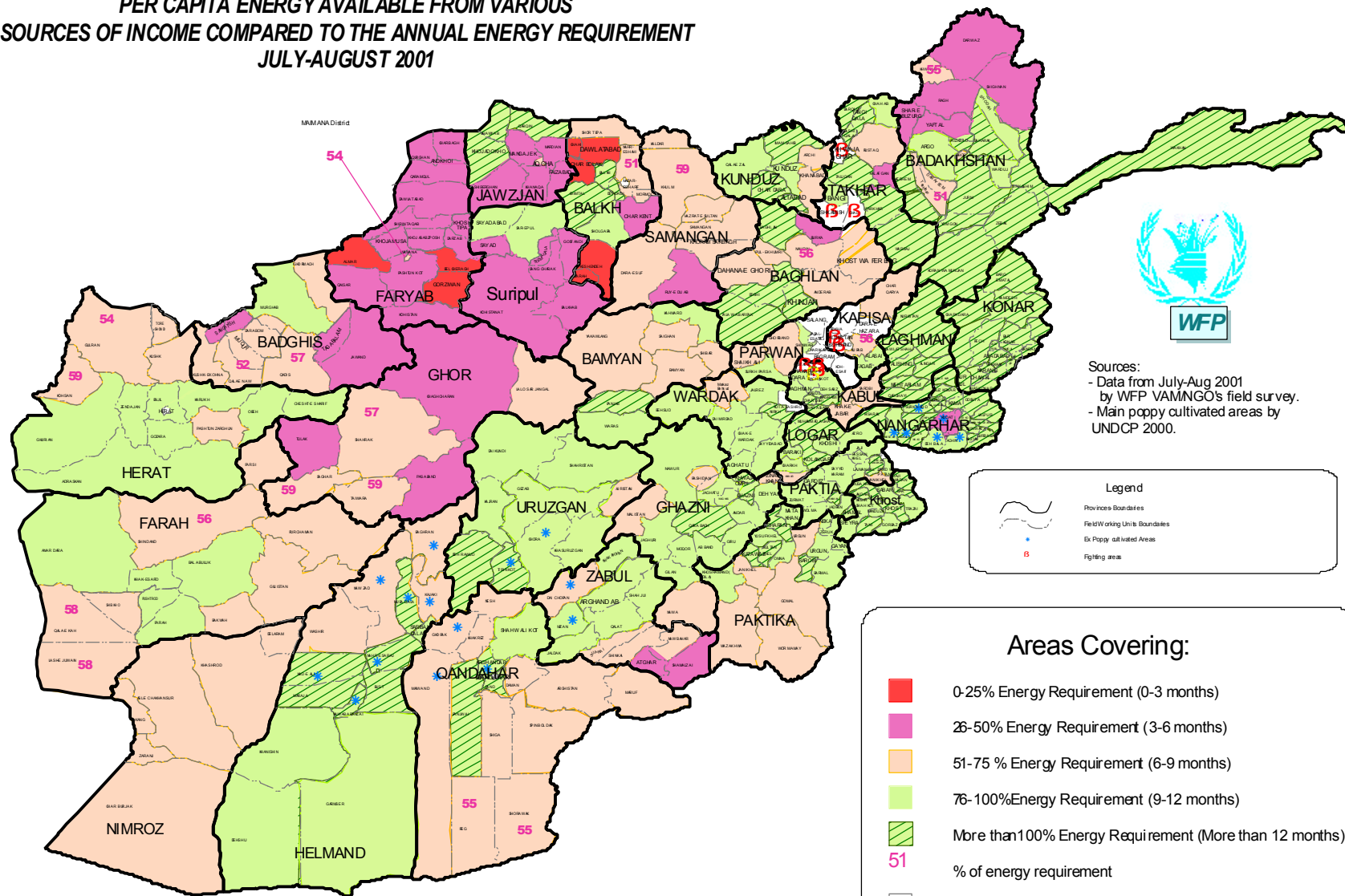


AFGHANISTAN
PER CAPITA ENERGY AVAILABLE FROM VARIOUS
SOURCES OF INCOME COMPARED TO THE ANNUAL ENERGY REQUIREMENT
JULY-AUGUST 2001



Sources:
 - Data from July-Aug 2001 by WFP VAMNGO's field survey.
 - Main poppy cultivated areas by UNDCP 2000.

Legend

- Provinces Boundaries
- Field Working Units Boundaries
- Main Poppy Cultivated Areas
- Fighting areas

Areas Covering:

- 0-25% Energy Requirement (0-3 months)
- 26-50% Energy Requirement (3-6 months)
- 51-75 % Energy Requirement (6-9 months)
- 76-100%Energy Requirement (9-12 months)
- More than 100% Energy Requirement (More than 12 months)
- % of energy requirement
- No data available